



多路阀 Multiple Branch Circuit Valve Series

BLV-SDBF18-4/1-35-A(BLV-4MDN18/35-E) 型上车多路阀 BLV-SDBF18-4/1-35-A(BLV-4MDN18/35-E) Multiple Directional Control Valve

型号说明 Model Code

BLV - SDBF18 - 4 / 1 - 25 - A
A 2 3 4 5 6

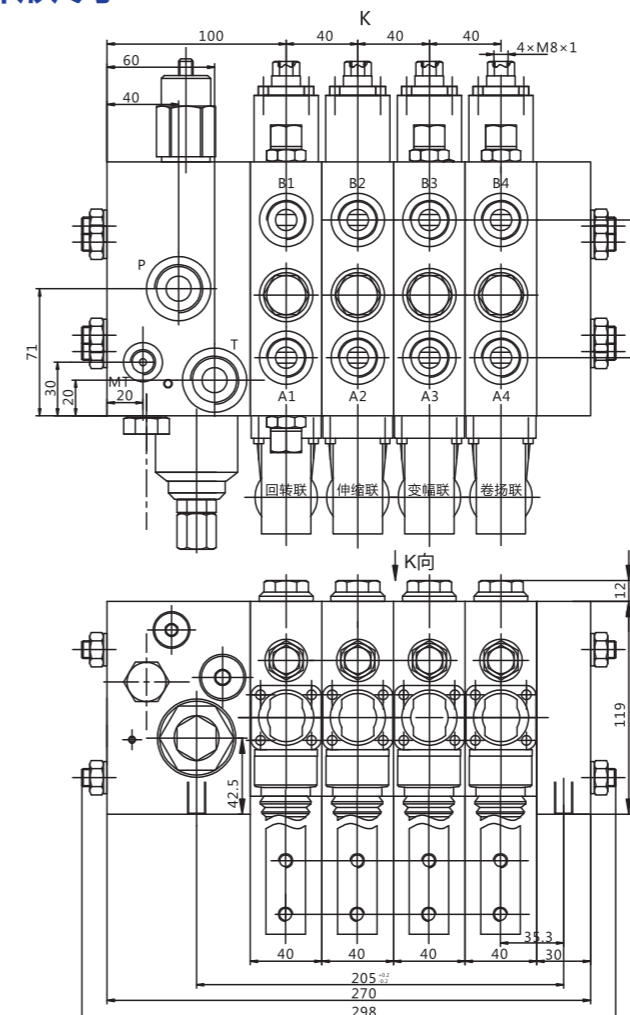
- 1、公司名称: BLV-博尔法;
- 2、控制型式: SDF-上车多路换向阀、SDBF-上车多路比例换向阀、SDBYF-上车多路比例液控换向阀;
- 3、产品通径:16-16mm、18-18mm、20-20mm;
- 4、工作联数: 1-1联.....7-7联;
- 5、油源数: 1-单油源、2-双油源、3-三油源;
- 6、额定压力: 25-25MPa;

1. Company Name: BLV-BOLEV;
2. Series Code: SDF-Multiple Directional Control Valve, SDBF-Manual Control Proportional Valve, SDBYF-Hydraulic Control Proportional Valve
3. Nominal Diameter:16-16mm, 18-18mm, 20-20mm;
4. Block:1-17-7;
5. Oil Source Number:1-Single oil source, 2-Double oil source, 3-Three oil source ;
6. Rated pressure:25-25MPa;

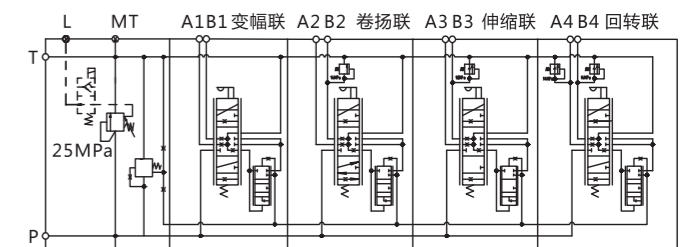
技术参数 Technical Specifications

P口流量: 80L/min P Port Flow Rate: 80L/min
额定压力: 25MPa Rated Pressure: 25MPa

外形尺寸 Overall Dimension

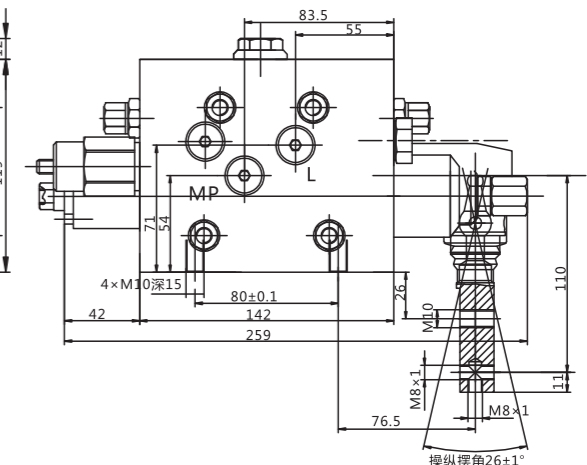


液压原理图 Hydraulic Schematic



各油口尺寸 Oil Ports Size

1.P.T口: G3/4 2.Ai, Bi口: G1/2 3.MT, MP: G1/4



球阀
单向阀/梭阀
截止阀/流量阀
液压锁
平衡阀
多路阀
控制阀组
转阀
电磁换向阀
附件类